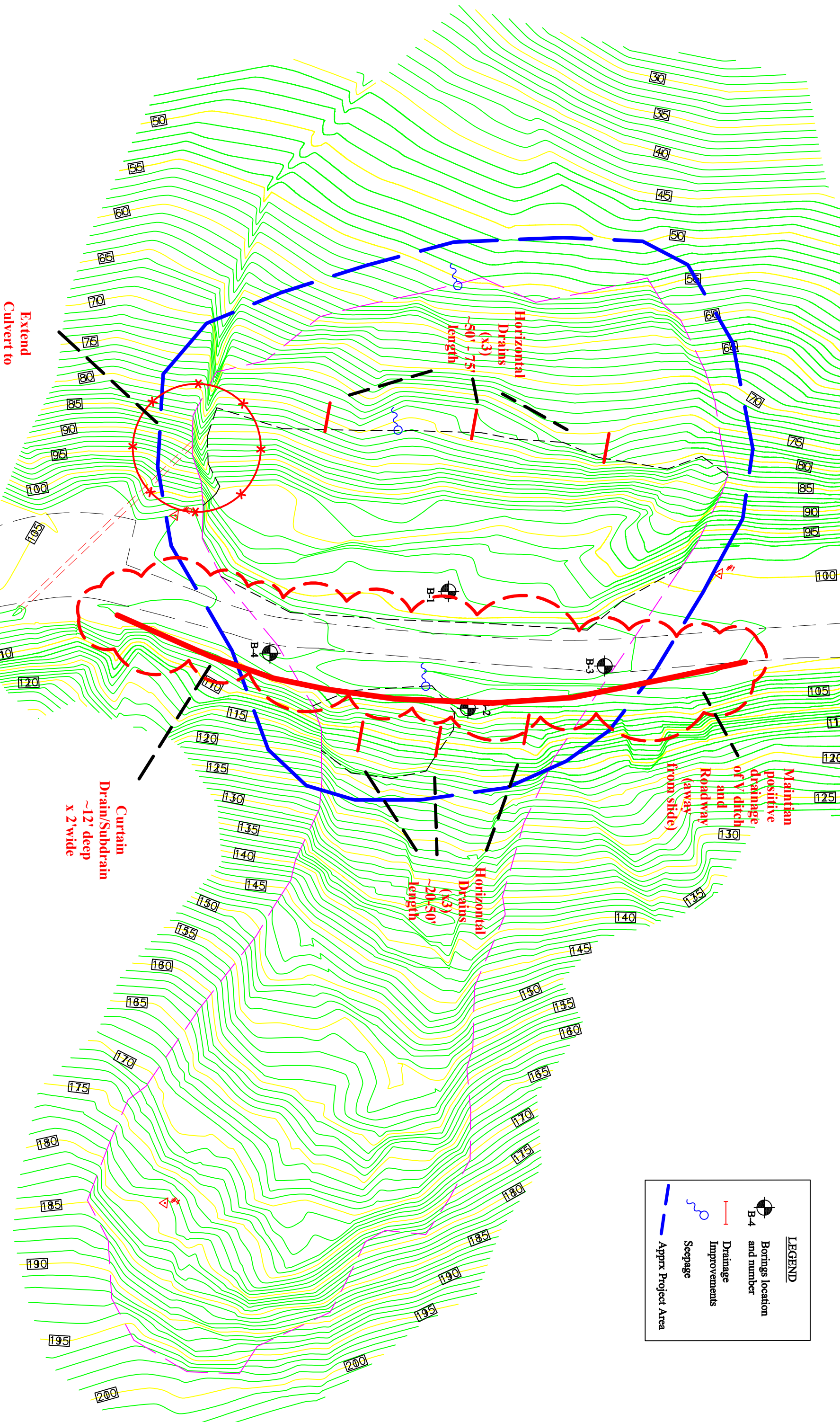
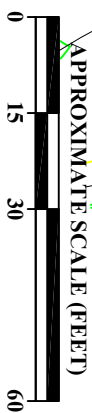


REFERENCE: Topography
derived from "Topographic Map by
Jackson Associates, Inc., Dated
March 7, 2024

**Extend
Culvert to
Erosion
Resistant
Area,
Away
from Slide**



LEGEND	
	Boring location and number
	Drainage Improvements
	Seepage
	Apprx Project Area



Brunising Associates, Inc.
5468 Skyline Blvd., Suite 201
Santa Rosa, California 95403
Tel: (707) 528-6108

Job No.: 13658-01
Appx
DRAFT
Date: 08/06/24

Drainage Improvements
NASH MILL ROAD LANDSLIDE
Nash Mill Road
Philo, California

PLATE